



DUBLIN
CALIFORNIA

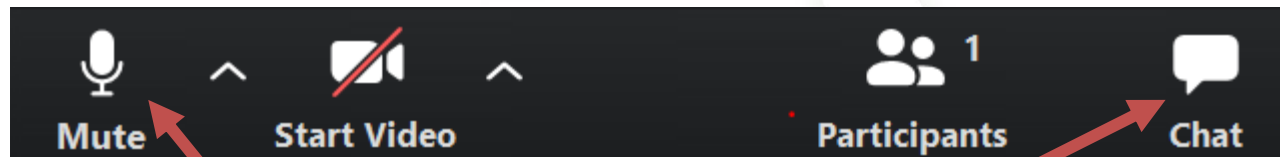
Mandatory Composting & Recycling in the City of Dublin

Virtual Assistance for Multifamily Properties



How to Use Zoom

- This presentation is being recorded.
- Please mute yourself. Video on is optional.
- 30 minute presentation + 15 minutes Q&A.
- If you need to leave the meeting, click the red “Leave Meeting” in the bottom right corner of your screen.
- Ask questions using tool bar at bottom of screen.



Click here to
mute

Use @Everyone
to ask questions



- Countywide public agency
- Mission is to reduce waste
- Commercial and residential education & assistance

Amador Valley Industries

Amador Valley Industries (AVI) is the franchised hauler for the City of Dublin

- Commercial and residential assistance
- Commercial and residential resources
- Collection of compost, recycling, and landfill



State laws:

- SB1383 requires all MFD's (5+ Units) to have **COMPOST** service (2022)
- StopWaste Ordinance 2021-01 (Organics Reduction & Recycling Ordinance) requires all MFD (5+ units) to have **RECYCLING** and **COMPOST** service (2022)
- Residents are required to separate compostable and recycling materials from landfill



The Three Streams



Cart and Bin Colors in Dublin

COMPOST



* To order a compost pail, contact your property manager!

GARBAGE



RECYCLING



COMING SOON!

New colored containers

- **Trash = grey/black**
- **Recycling = blue**
- **Compost = green**

Accepted Materials Vary by City

Keep an eye out for tricky items! Use the <https://resource.stopwaste.org/curbside/dublin#> to determine how to properly sort materials



What is Recyclable in Dublin?



ALL PLASTICS #1-7

Clean and Dry Paper



*Please flatten cardboard.

Rigid Plastics

*No Styrofoam



Metals



*Empty aerosol cans only

Recycling – Bag Liners

Loose items only



NO PLASTIC BAGS



If it was once alive...Compost!



What is Compostable in Dublin?



*Shredded paper, free of staples



Food Scraps



Food-Soiled Paper



Plant Debris



Compostable Foodware Items in Dublin



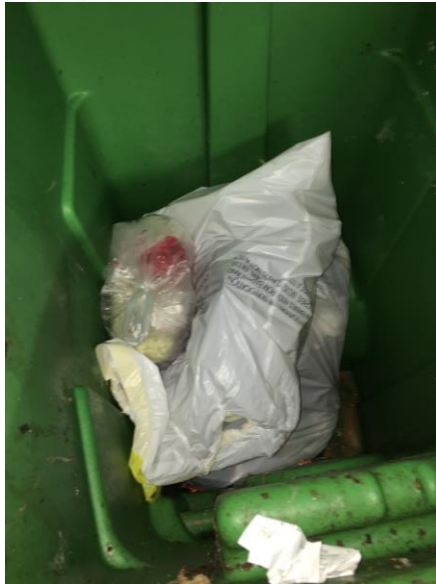
Compost – Bag Liners

Newspaper lining

Paper bags

Loose compost items

NO PLASTIC OR GREEN BIO BAGS



Where does the compost go?

This compost is utilized by home gardeners and local farmers.



The facilities process the material into rich compost.



Food scraps and other compostables go into your curbside green bin.



Haulers collect the compostables and deliver to commercial facilities.



Tips for Collecting Food Scraps



Tub It

Keep a small tub on the counter. Collect trimmings then dump into the curbside green bin.



Bag It

Use a paper bag to collect food scraps. Then toss it all into the green bin.



Line It

Use newspaper to fold a liner. Then toss into the green bin.



What goes into the Landfill in Dublin?



BPI-certified compostable

Mylar and Styrofoam



Plastic-Lined Products



BPI-certified compostable



Household Items



*Padded
Envelope
and Air
Pillows



Hygiene Items



Other Trash Items in Dublin



Which Items Do Not Belong in Any of the Bins?



Free household drop-offs are available in:
Oakland, Hayward, Fremont, Livermore

Use Resource.Stopwaste.org
and click on the RE:Source tool for more
drop-off and pick-up options
*ask your property manager about
[hazardous waste collection at your residence](#)



Textile Recycling Program

AVI offers textile pickups for Dublin residents during the first full week of July, October, January, and April.

Please contact your property manager if you are interested in participating!

Acceptable materials, in good condition, include:

- Clothing & Shoes
- Stuffed animals
- Bedding Towels



Non-acceptable materials include:

- Wet or moldy textiles
- Textiles soiled with biowaste, blood, toxic chemicals
- Worn out items

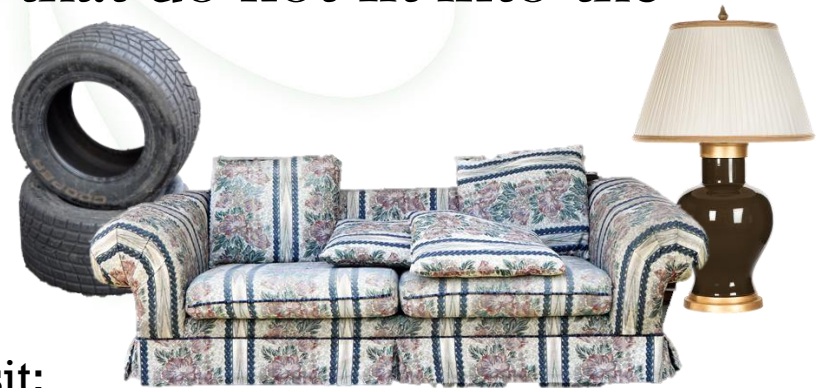


Bulky Pickup in Dublin

- Residents can contact their property manager to coordinate bulky item pickups.
- Bulky waste includes furniture, large electronics, tires, mattresses, and other items that do not fit into the curbside cart or bin.

For an extensive list of items accepted for bulky pickup, please visit:

<https://resource.stopwaste.org/curbside/dublin#>



Review Questions

Which item(s) go into the Recycling?

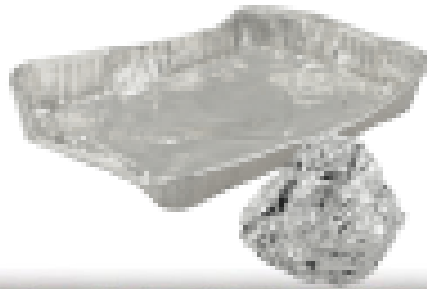
A.



B.



C.



D.



Review Questions

Which item(s) go into the Recycling?

A.



B.



C.



D.



Recycling: Quick DO and DON'T

DO

DON'T



Review Questions

Which item(s) go into the Compost?

A.



B.



C.



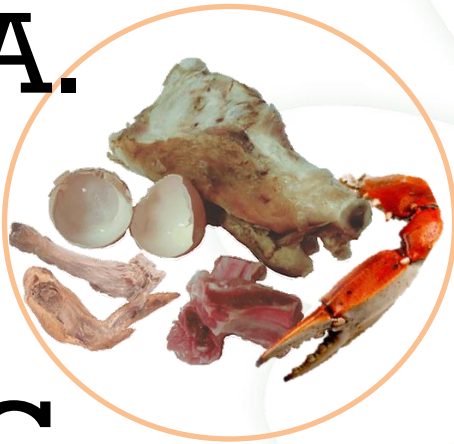
D.



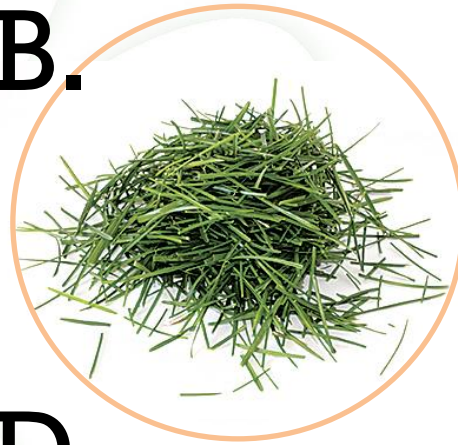
Review Questions

Which item(s) go into the Compost?

A.



B.



C.



D.



Compost: Quick DO and DON'T

DO



DON'T



Review Questions

Which item(s) go into the Landfill?

A.



B.



C.



D.



***Shredded Paper**

***Animal Waste**

Review Questions

Which item(s) go into the Landfill?

A.



C.



*Shredded Paper

B.



D.



*Animal Waste

Landfill: Quick DO and DON'T

DO



*Padded
Envelope and
Air Pillows



DON'T



*Bamboo/Wood Utensils



Thank You for Helping Reduce Waste and Recycle Right!



For more information please visit:
www.StopWaste.org/rules