



**DUBLIN**  
CALIFORNIA

# **COMMUNITY MEETING 01**

JORDAN RANCH NEIGHBORHOOD SQUARE  
JUNE 28TH, 2022

# PROJECT BACKGROUND

## INTRODUCTION

This 2-acre park in the City of Dublin's Jordan Ranch Development will be designed as a neighborhood square for the surrounding community. Located off of Central Parkway and adjacent to Cottonwood Creek School, this park will be a central open space for the area and a playful gathering space for all.

## MASTER PLAN

2022 Parks and Recreation Master Plan: Designates parcel as Future Neighborhood Square

## PROJECT COST

\$1.9 million

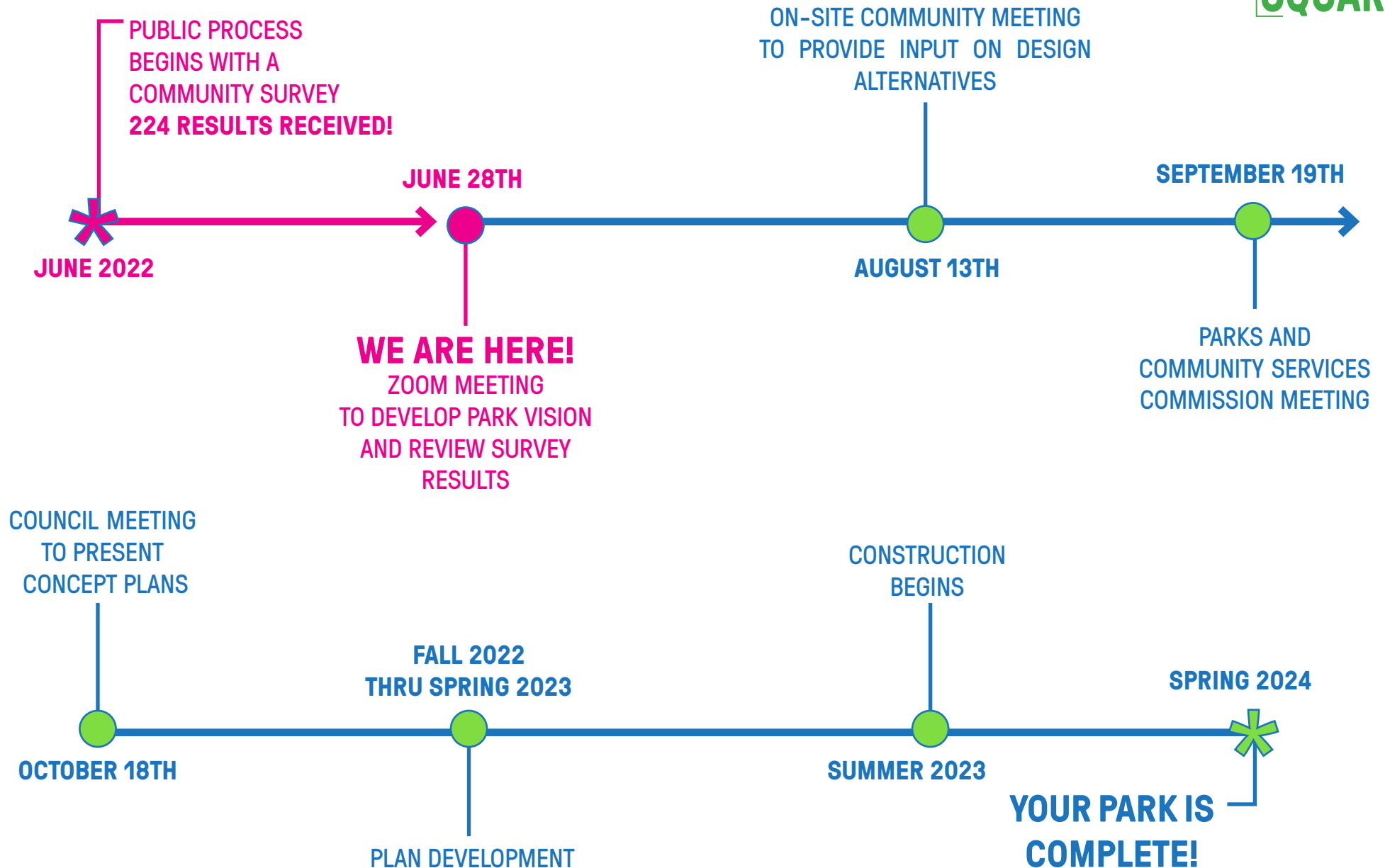
## PROJECT COMPLETION

Spring 2024

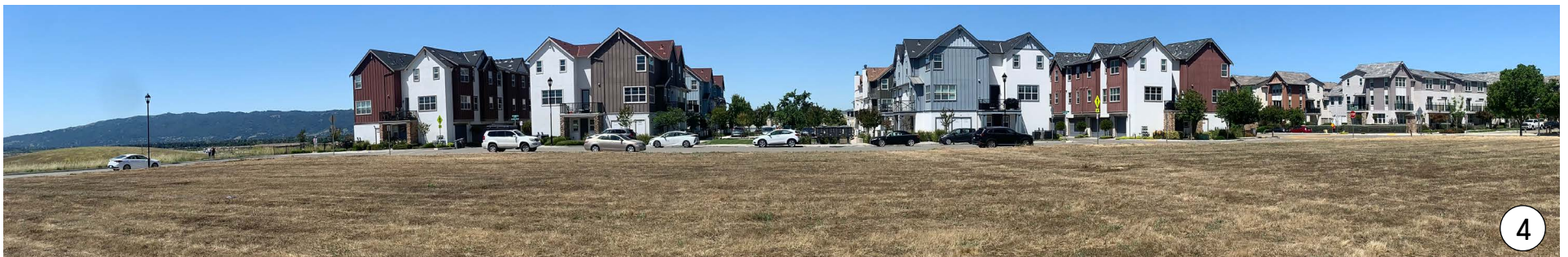
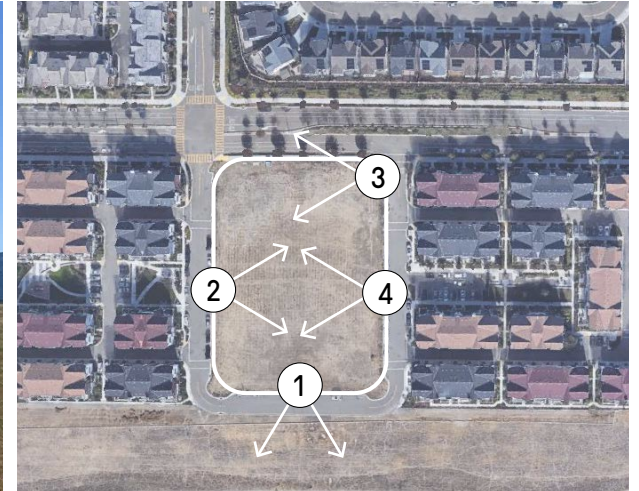
## FUTURE CONTACT

Send emails via private zoom chat to Elisa for up-to-date project information.

# TIMELINE AND PROCESS

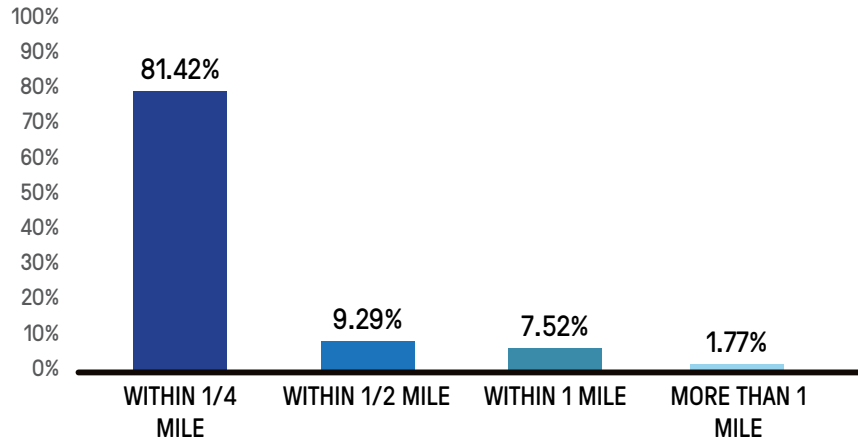


# EXISTING CONDITIONS

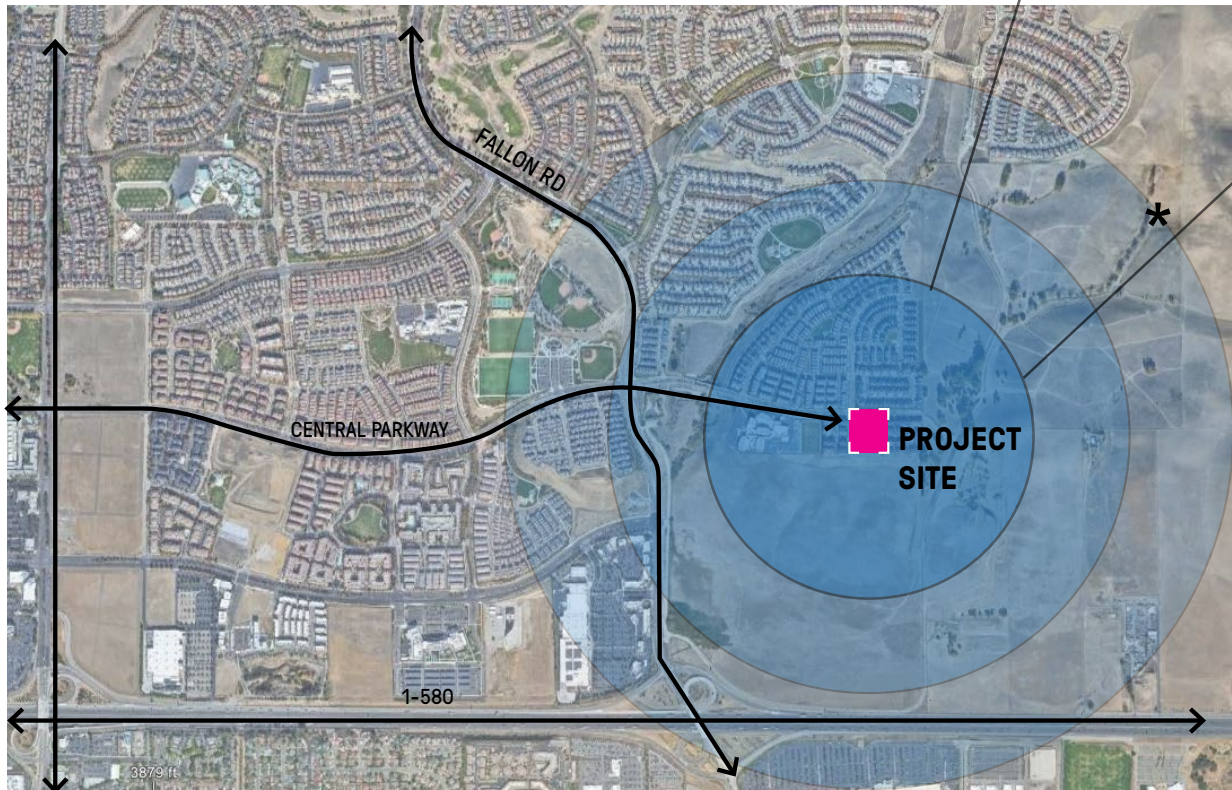
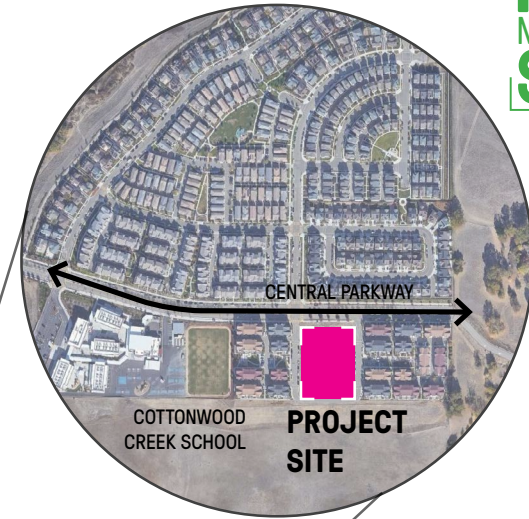


# PROJECT LOCATION

FINDINGS: MOST RESPONDENTS LIVE WITH 1/4 MILE OF THE PARK



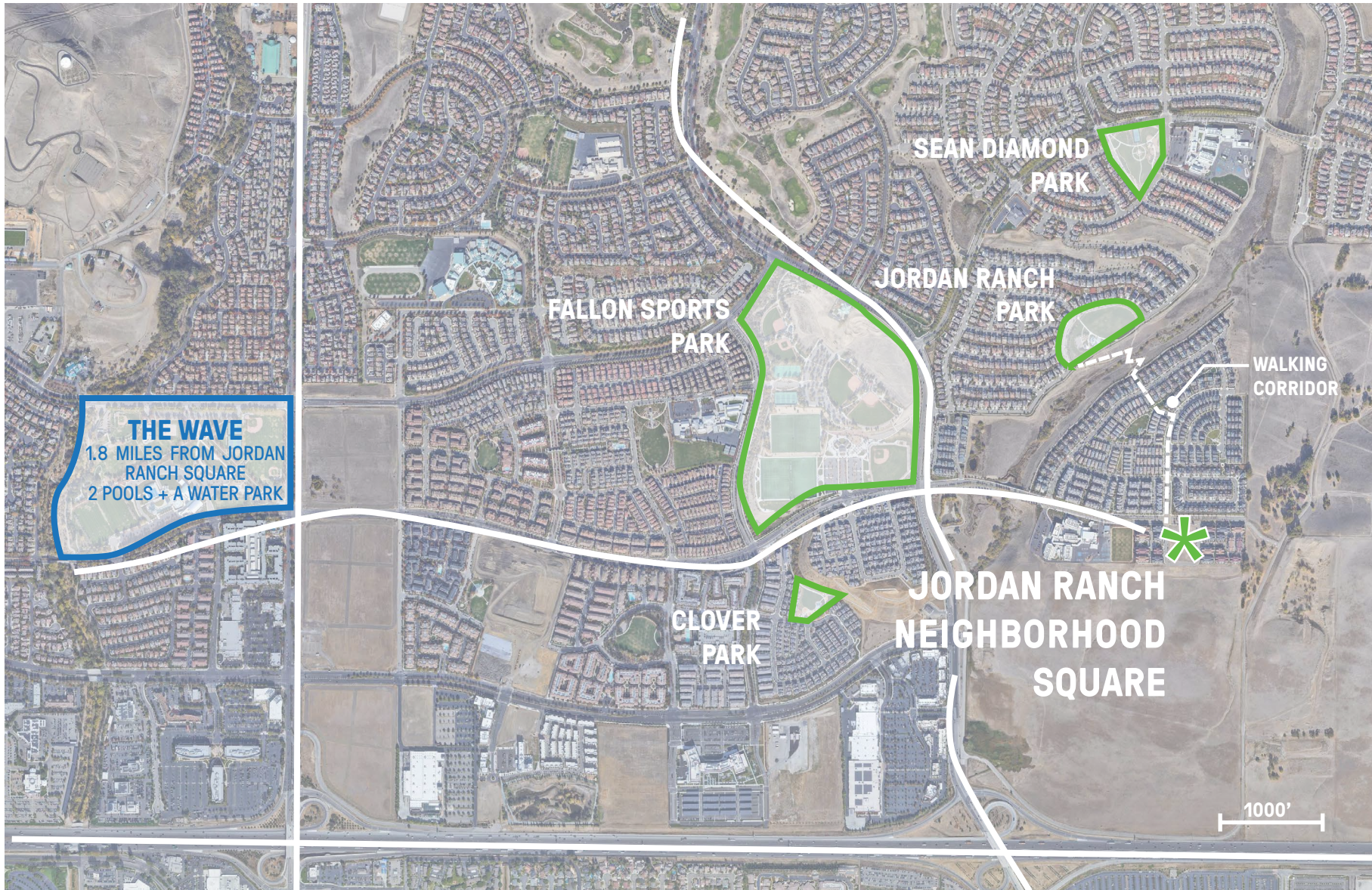
**JORDAN  
RANCH**  
NEIGHBORHOOD  
**SQUARE**



# COMMUNITY PARKS

EXISTING PARKS WITHIN 2 MILES

**JORDAN  
RANCH**  
NEIGHBORHOOD  
**SQUARE**



# SCALE STUDIES

HOW DOES THE 2 ACRE NEIGHBORHOOD SQUARE COMPARE TO LOCAL PARKS

**JORDAN  
RANCH**  
NEIGHBORHOOD  
**SQUARE**



## **CLOVER PARK - 2 ACRES**

PLAYGROUND, PICNIC AREA, INFORMAL LAWN AREA, PUBLIC ART, FITNESS EQUIPMENT, RESTROOM



## **SEAN DIAMOND PARK - 4 ACRES**

TWO PLAYGROUNDS, A TENNIS COURT, GRASS VOLLEYBALL COURT, SHADED PICNIC AREA, WALKING AND EXERCISE PATHS, ZIP LINE, ROSE GARDEN, RESTROOM AND A GATHERING SPOT AT THE CENTER OF THE PARK



## **JORDAN RANCH PARK - 5 ACRES**

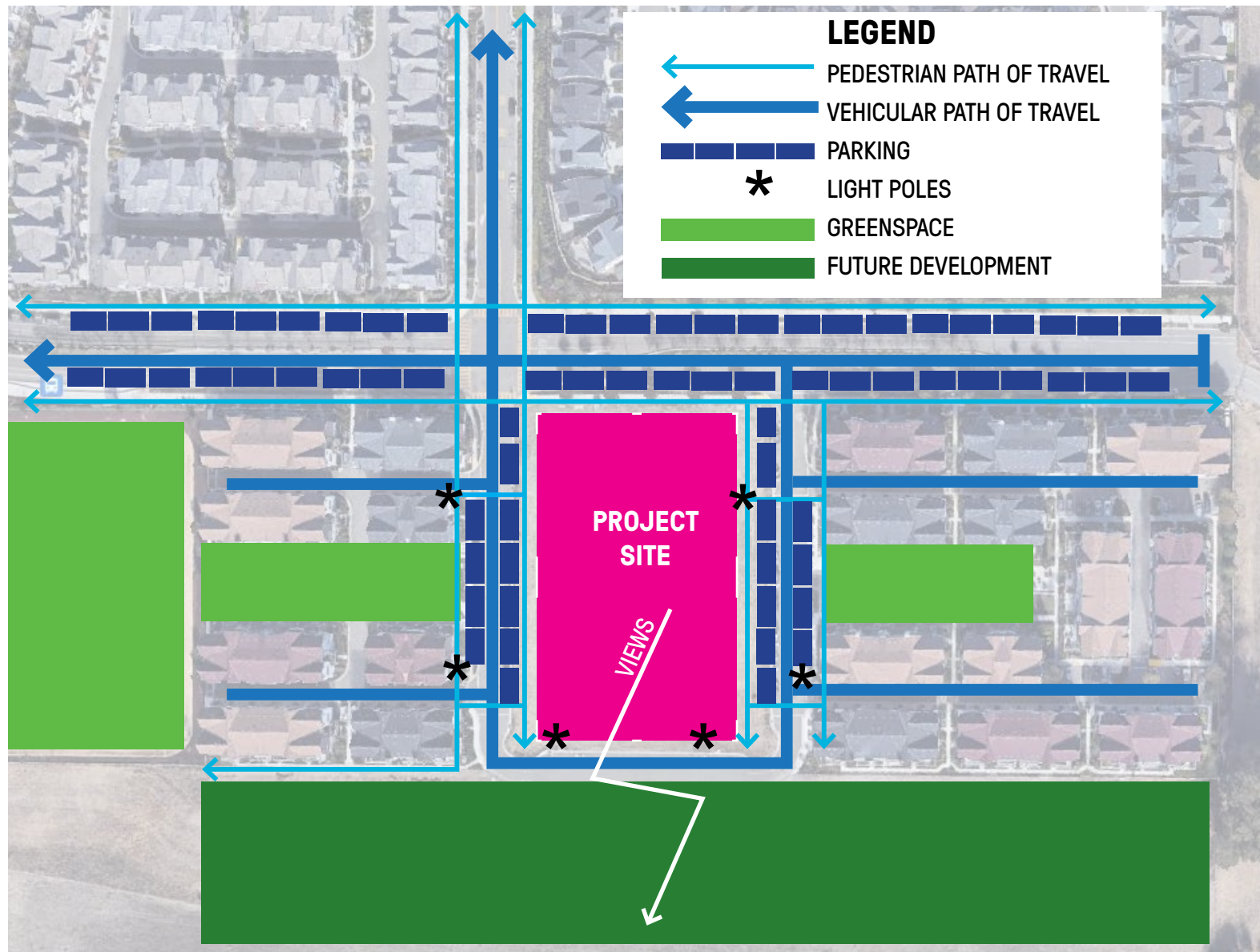
TWO PLAYGROUND AREAS, A BASKETBALL COURT, A GRASS VOLLEYBALL COURT, A GROUP PICNIC AREA WITH TABLES AND BARBEQUE'S, SPACES FOR INFORMAL FAMILY PICNICS, OPEN SPACE MEADOW FOR INFORMAL SPORTS, GAMES AND ACTIVITIES TRAIL ACCESS, WATER FOUNTAINS, AND RESTROOMS



## **FALLON SPORTS PARK -60 ACRES**

FOUR LIGHTED SYNTHETIC TURF SOCCER FIELDS, CRICKET FIELD, SEVEN BASEBALL FIELDS (4 LITTLE LEAGUE, 2 LIGHTED SOFTBALL, 1 90' LIGHTED DIAMOND, 5 LIGHTED BATTING CAGES), FOUR LIGHTED BOCCE BALL COURTS, FOUR SAND VOLLEYBALL COURTS, AN ADVENTURE PLAYGROUND, RESTROOMS, CONCESSION BUILDING, GROUP PICNIC, AND ADDITIONAL PARKING

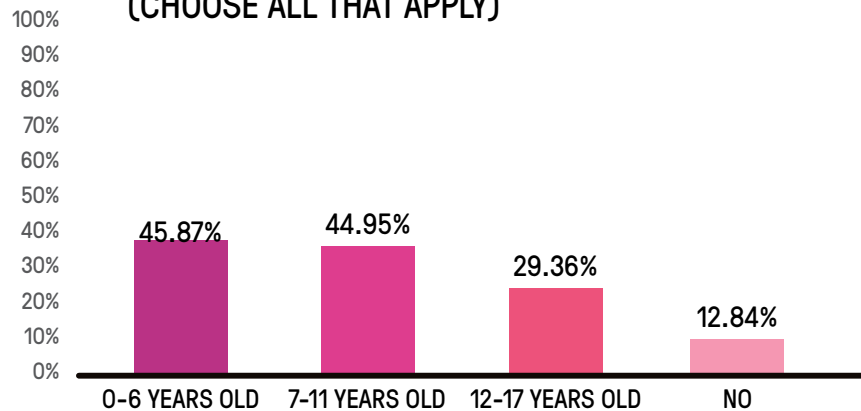
# SITE ANALYSIS



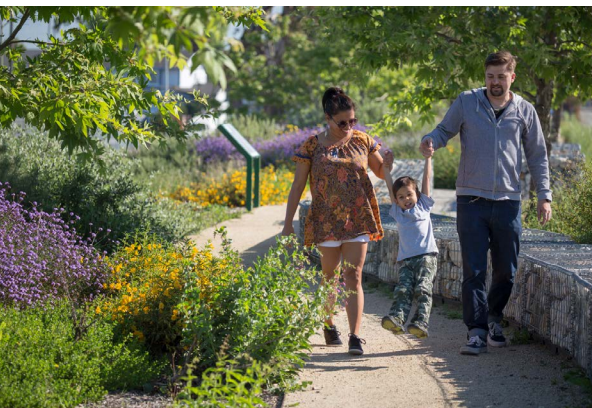
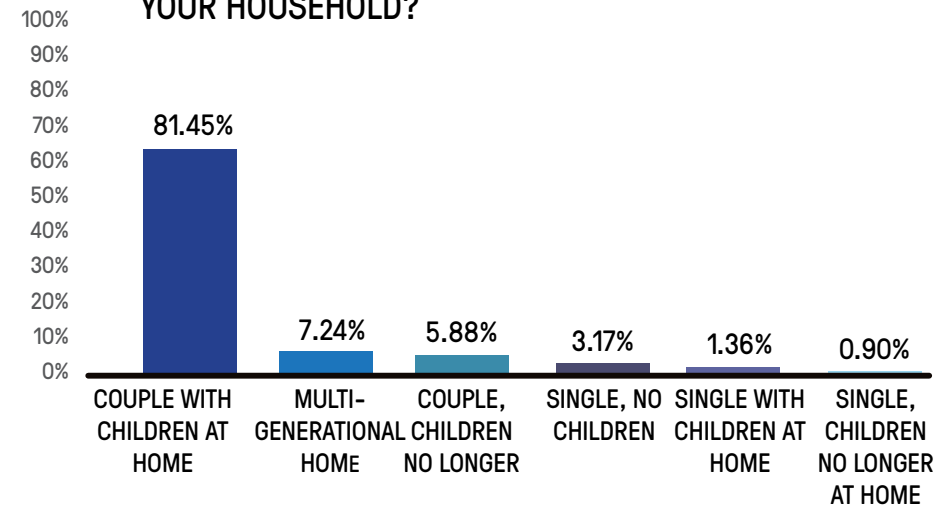
# COMMUNITY

FINDINGS: MOST RESIDENCE ARE COMPRISED OF YOUNG FAMILIES

DO YOU HAVE CHILDREN UNDER THE AGE OF 18?  
(CHOOSE ALL THAT APPLY)



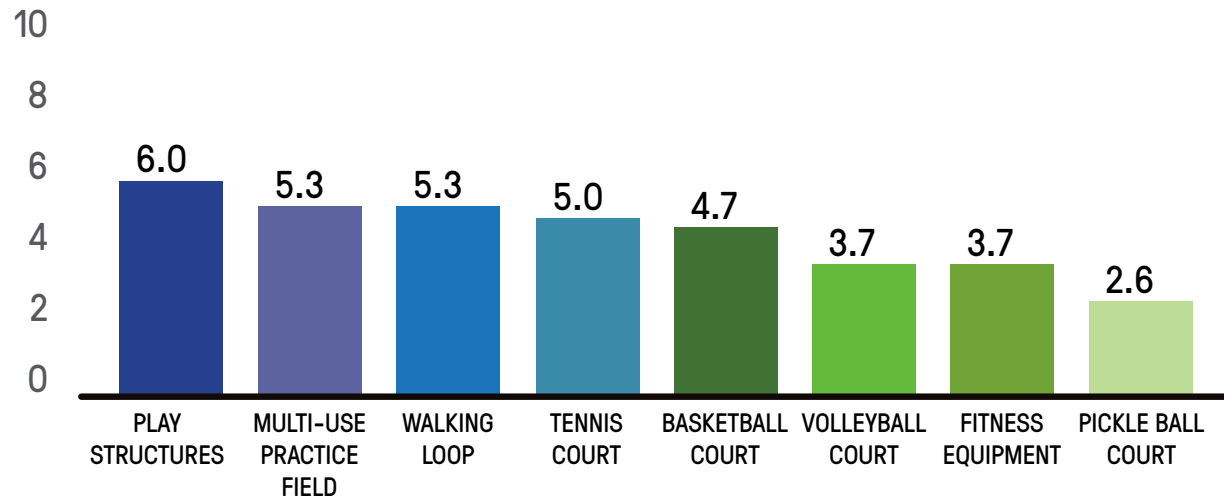
WHICH ONE OF THESE CATEGORIES BEST APPLIES TO  
YOUR HOUSEHOLD?



# ACTIVE FACILITIES

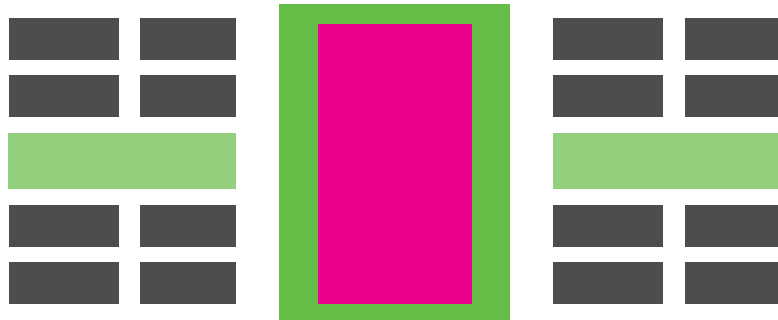
FINDINGS: RESIDENCE WANT VARIOUS MULTI-USE ACTIVE FACILITIES

WHICH ATHLETIC & ACTIVE FACILITIES WOULD YOU LIKE TO SEE IN YOUR FUTURE PARK? RANK THE OPTIONS WITH 1 BEING THE MOST APPROPRIATE AND 8 THE LEAST.

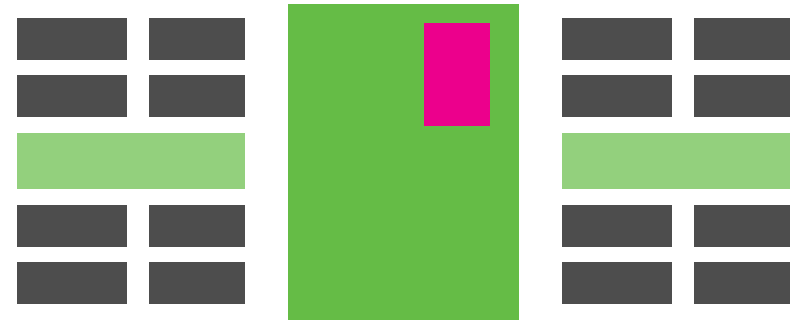


# SCALE STUDIES

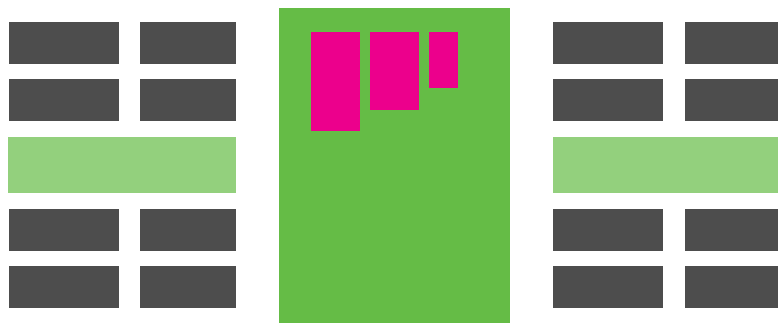
HOW DOES THE 2 ACRE NEIGHBORHOOD SQUARE ACCOMMODATE ACTIVITIES



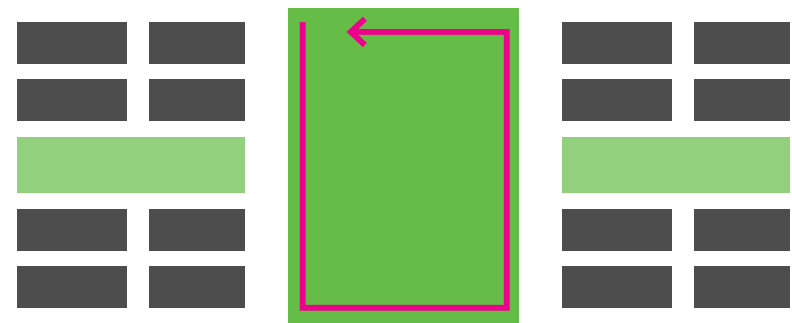
SOCCER FIELD



FULL BASKETBALL COURT



TENNIS, VOLLEYBALL, PADDLE TENNIS

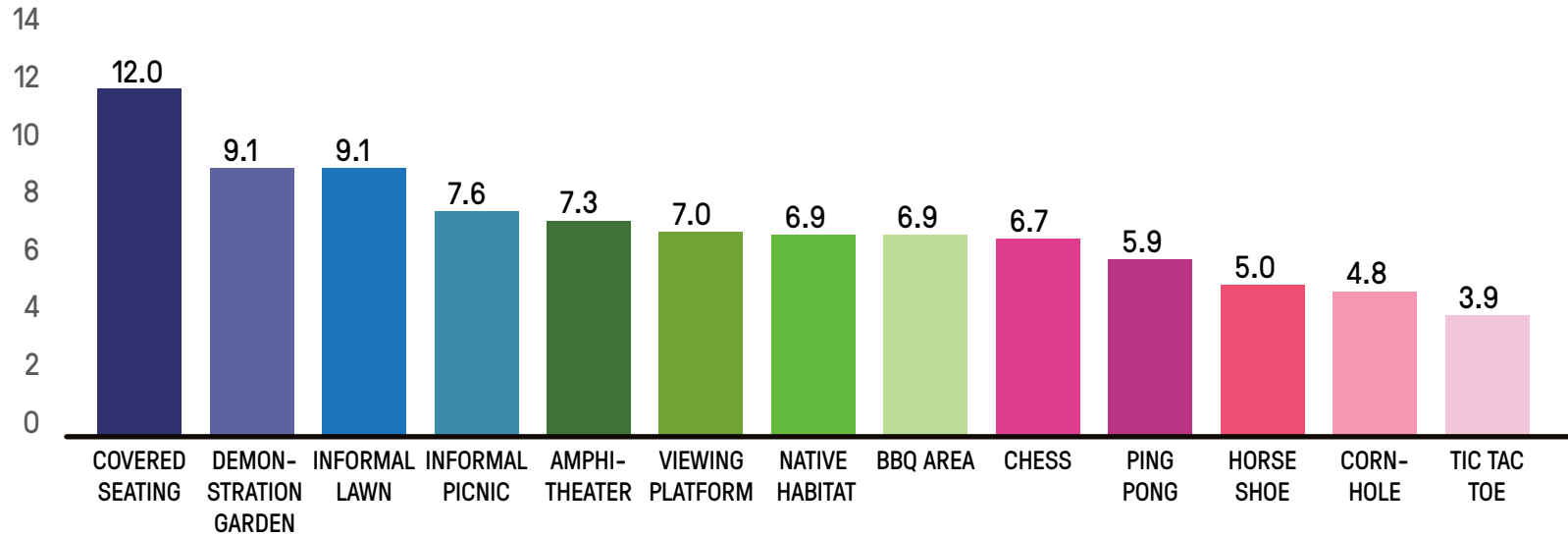


.2 MILE WALKING LOOP

# AMENITIES RESULTS

FINDINGS: MOST RESIDENCE WOULD LIKE A SPACE WITH AMENITIES FOR OUTDOOR LEISURE AND BACKYARD ACTIVITIES IN A COMFORTABLE ENVIRONMENT

WHICH AMENITIES WOULD YOU LIKE TO SEE IN YOUR PARK? RANK THE OPTIONS WITH 1 BEING THE MOST APPROPRIATE AND 13 THE LEAST.



# WHAT WE'VE HEARD

## BREAKOUT GROUPS FOR DISCUSSION

### ACTIVE FACILITIES

---

#### PRIMARY FACILITIES

PLAY STRUCTURES  
MULTI-USE PRACTICE FIELD  
WALKING LOOP  
TENNIS COURT  
BASKETBALL COURT: FULL OR HALF  
VOLLEYBALL COURT  
FITNESS EQUIPMENT  
PICKLE BALL

#### ADDITIONAL INPUT

CRICKET FIELD  
TRAMPOLINE  
CYCLING  
PULL-UP BARS  
BMX TRACK  
ZIP LINE  
SOCCER  
HANDBALL  
BASKETBALL COURT

### MISCELLANEOUS

---

SWIMMING  
RESTROOMS  
LIGHTING FOR SAFETY

### AMENITIES

---

#### PRIMARY FACILITIES

COVERED SEATING  
DEMONSTRATION GARDEN  
INFORMAL LAWN  
INFORMAL PICNIC  
AMPHITHEATER  
VIEWING PLATFORM  
NATIVE HABITAT  
BBQ AREA  
CHESS  
PING PONG  
HORSE SHOE  
CORN HOLE  
TIC TAC TOE

#### ADDITIONAL INPUT

GARDEN  
TREES  
BBQ  
GAZEBO  
DOG PARK  
COVERED PICNIC  
BENCHES

# BREAKOUT QUESTIONS

1. Are there any findings you would like to review?
2. Are there any findings that are unexpected?
3. I would like to hear what is the most important thing you would like in the park.
4. Other takeaways or final thoughts?

# WHAT'S NEXT

TAKE SURVEY RESULTS AND PROVIDE THREE CONCEPTS FOR  
COMMUNITY DISCUSSION ON-SITE + INPUT ON  
AUGUST 13TH, 2022

A line-art illustration of a park opening event. In the background, there are rolling hills and a row of houses. In the middle ground, a green rectangular field is the focus. A person stands in the center of the field with their arms raised, reaching for a ball. To the left, a man and a woman are embracing. In the foreground, a group of people are gathered, some holding bags. Two butterflies are flying near the field. The overall style is simple and illustrative.

**PARK OPENING SPRING 2024!**  
**THANK YOU**