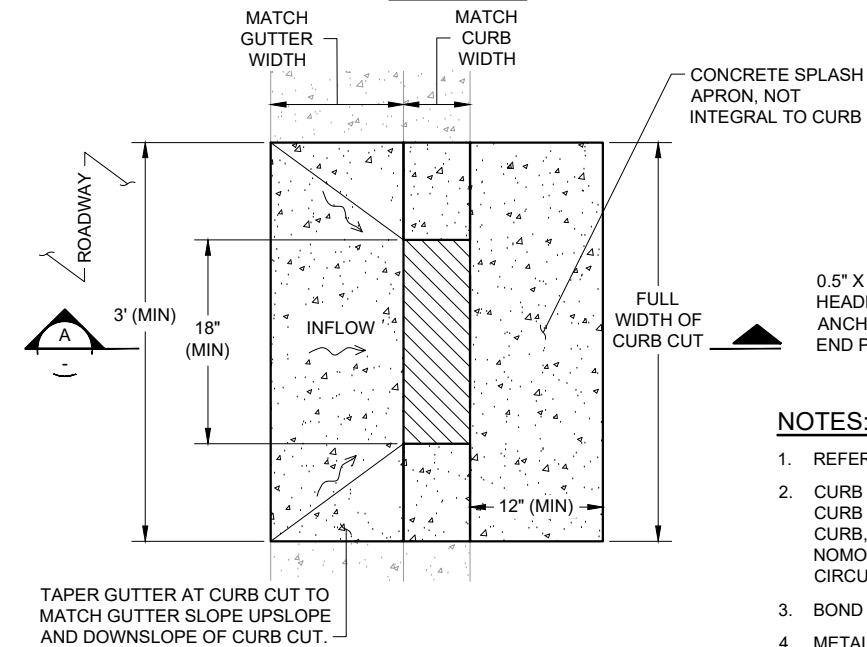


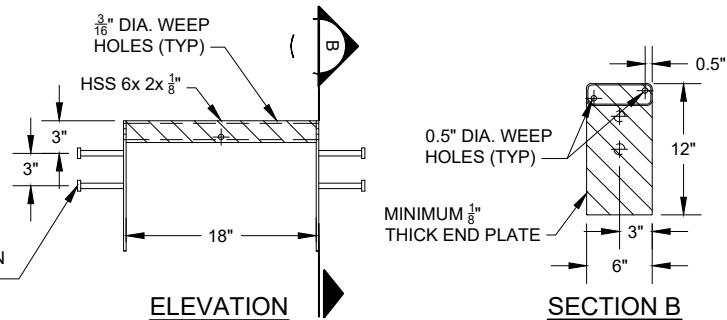
**ISOMETRIC**



**PLAN**

**SECTION A**

**METAL INLET ASSEMBLY**



**NOTES:**

1. REFER TO GI-1 NOTES FOR GUIDELINES AND CHECKLIST.
2. CURB CUT INLETS SHALL BE ADEQUATELY SIZED, SPACED, AND SLOPED TO MEET HYDRAULIC REQUIREMENTS. THE CURB CUT OPENING WIDTH SHALL BE SIZED BASED ON THE CATCHMENT AREA, LONGITUDINAL SLOPE ALONG THE CURB, AND THE CROSS SLOPE OF THE GUTTER OR ADJACENT PAVEMENT AT THE INLET. SEE SIZING EQUATIONS AND NOMOGRAPHS FOR CURB OPENING INLETS IN THE U.S. DEPARTMENT OF TRANSPORTATION HYDRAULIC ENGINEERING CIRCULAR NO. 27.
3. BOND NEW CURB AND GUTTER TO EXISTING CURB AND GUTTER WITH EPOXY AND DOWEL CONNECTION.
4. METAL INLET ASSEMBLY SHALL BE HOT-DIP GALVANIZED IN ACCORDANCE WITH ASTM A-123.



**BIORETENTION COMPONENTS: GUTTER CURB CUT INLET DETAIL**

GREEN INFRASTRUCTURE  
TYPICAL DETAILS  
CITY OF DUBLIN PUBLIC WORKS

SCALE: NOT TO SCALE  
DATE: MAY 11, 2018  
DRAWN BY: K. K.  
CHECKED BY: A. R.

APPROVED:  
PUBLIC WORKS DIRECTOR

**GI-6A**