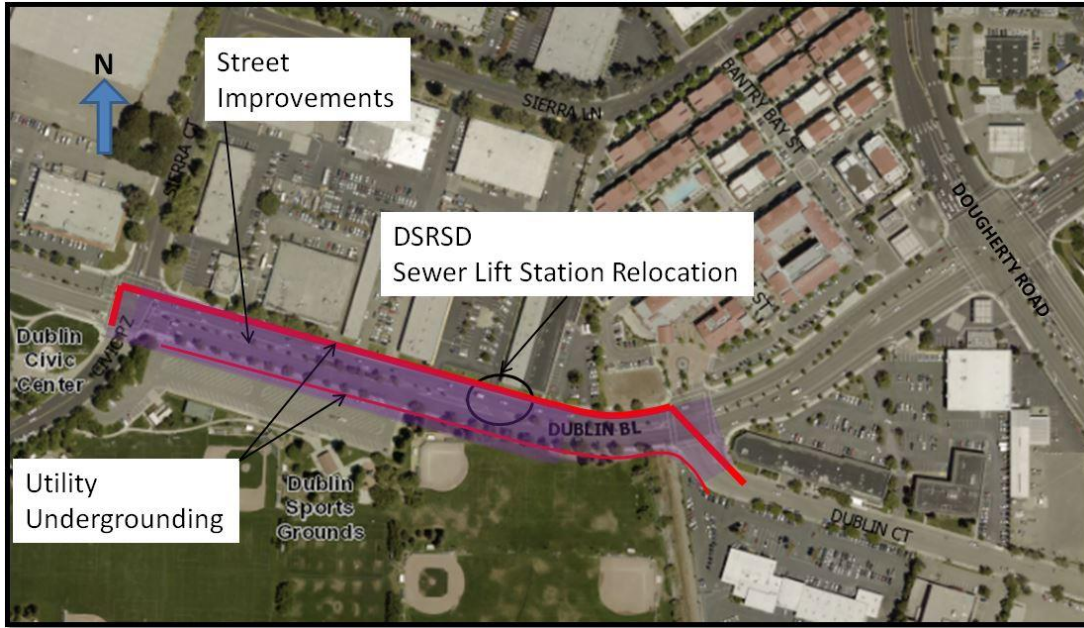




Dublin Boulevard Improvements Frequently Asked Questions

There are three projects associated with the planned improvements to widen Dublin Boulevard which will impact Dublin residents and commuters.



Q: Why is Dublin Boulevard being improved?

A: Ultimately, the road widening project will improve traffic flow along Dublin Boulevard, as well as the appearance of the streetscape. The section of Dublin Boulevard west of Dougherty Road from Dublin Court to Sierra Court/Civic Plaza is an older, narrow section of roadway. This area has been subject to traffic delays due to the narrow width of the road and the merging of vehicles from three to two lanes. In addition, this section of Dublin Boulevard is the final segment of this roadway that has above-ground utilities, which will be moved underground during this project.

Q: What is included in this project?

A: There are two phases to the construction:

Phase 1A (estimated time frame July 2017 – September 2017): Dublin San Ramon Services District (DSRSD) will replace and relocate an underground sewer lift station.

Phase 1B (estimated time frame late May 2017 – November 2017): The City of Dublin, in conjunction with Pacific Gas & Electric (PG&E), AT&T, and Comcast, will begin replacing and relocating the above-ground utilities with underground utilities. In addition to increasing reliability, placing the utilities underground will increase safety and improve the appearance of the roadway.

Phase 2 (estimated time frame November 2017 - January 2019): The City of Dublin will hire a contractor to improve the road, which will include widening Dublin Boulevard from Sierra Court to Dublin Court in the westbound direction from two to three lanes, and construction of a Class 2 bike lane. Traffic signals in this segment will be upgraded to include enhanced detection for bicyclists in left-turn lanes. The project will also include asphalt surfacing, new landscaping, streetscape improvements, median islands, curbs and gutters, and improved driveway and sidewalk design for better accessibility.

Q: What will the construction mean for the traveling public?

A: Dublin Boulevard is a highly traveled road, with nearly 33,000 vehicular trips a day, and is very important to local and regional traffic flow. Due to the significant traffic volumes during the daytime hours, most of the work that requires a lane closure will be done at night (typically 8:00 p.m. to 6:00 a.m.) so as to minimize traffic impacts. The work will require one lane of traffic to be closed. In the summer of 2017, westbound traffic will be detoured onto eastbound lanes at night from 9:00 p.m. to 6:00 a.m. for up to two weeks. However, no closure of Dublin Boulevard is anticipated.

Q: When will construction begin and end?

A: The work is tentatively set to begin at the end of May 2017, with an anticipated completion date in January 2019.

Q: Why will construction take so long? Couldn't this be completed more quickly?

A: We realize this is an important roadway and that the construction creates significant inconvenience for travelers and nearby residents. In order to minimize traffic delays, most of the crews will be working Sunday evening through Friday morning for ten-hour shifts, starting at 8:00 p.m. and working until 6:00 a.m.

Q: Will on-street parking be allowed on Dublin Boulevard?

A: No, once construction begins for the project, on-street parking will be prohibited, and the ultimate street configuration will not accommodate on-street parking between Dublin Court and Sierra Court/Civic Plaza.

Q: Will pedestrian access be maintained during construction?

A: Yes, pedestrian access will be maintained at all times on at least one side of the road during construction.

Q: Will businesses be open during construction?

A: Yes, access to all businesses will be maintained during construction. During the brief nighttime westbound road closure, the contractors will work with businesses to minimize potential impacts to deliveries.

Q: What has been done to notify residents about this project?

A: Residents and businesses along the impacted section of Dublin Boulevard will receive notices of the upcoming work. The City of Dublin will keep area residents updated on its website at www.dublin.ca.gov/roadwork, and signage will be in place to notify drivers. Local businesses and residents can also request meetings to learn more.

Q: How can I learn more and stay informed?

A: The City's webpage, www.dublin.ca.gov/roadwork, will be updated regularly. Residents may also sign up to receive email or text message updates from the City of Dublin's Public Works Department. Visitors to the website may click on the "Keep Informed" button on the front page, and then scroll to the "News Flash" section. From there, it is easy to sign up for updates from the Public Works Department. You can learn more about the DSRSD project at www.dsrdsd.com/sewer-lift.